

# 44-52 Anderson Street, Chatswood Public view analysis study

**Date**  
24 September 2021

**Revision**  
00

**Title**  
ASK210924\_001

make

## View 01 Victoria Avenue



### Victoria Avenue / Anderson Street intersection facing north

View situated within the city core facing north along Anderson Street. View situated at pedestrian junction of Victoria Avenue.



### Existing condition

- Commercial buildings in the core highlight the foreground of the view.
- East side of Anderson street retains mid rise size buildings.
- High rise residential buildings to the west continue to maintain height with minimal setbacks.
- Mature trees soften and reduce the scale of the buildings to the west of Anderson Street.



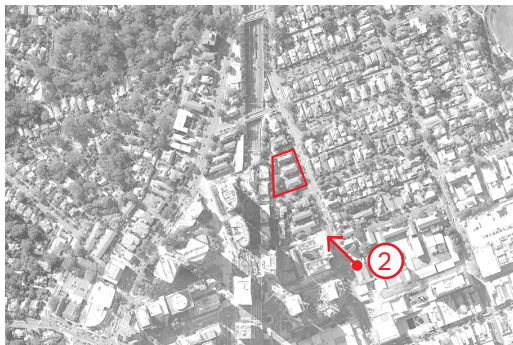
### Proposed condition

- Additional buildings have minimal impact to visual amenity.
- 44-52 Anderson Street sits largely behind existing massing.
- Visibility of form, use and materiality is minimal from this view.
- Additional greening along street frontage of 44-52 Anderson Street will soften view further.



## View 02

### Anderson Street



#### Anderson Street / Help Street intersection facing north west

View situated within the city core facing north west along Anderson Street. View situated at pedestrian junction on Help Street.



#### Existing condition

- Mid rise buildings to the east of Anderson Street have reduced in scale and of more of a residential typology.
- High rise residential buildings west of Anderson Street retain height and character from commercial core.
- Mature trees soften and reduce the scale of the buildings to the west of Anderson Street.

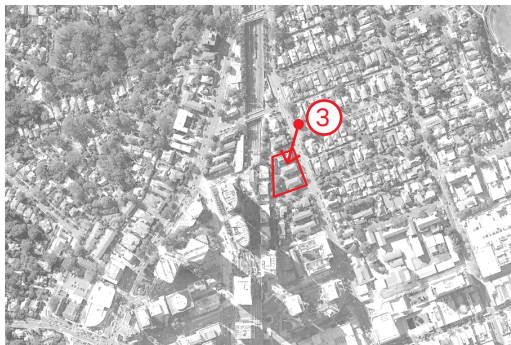


#### Proposed condition

- Expansion of core massing shown alongside the west of Anderson Street. Existing buildings in the foreground minimise the impact of the additional massing.
- 44-52 Anderson Street continues massing character from neighbouring sites.
- Building form and articulation reduce impact of overall form.
- Material use proposed to reflect character of localised neighbourhood.
- Additional greening along street frontage of 44-52 Anderson Street will soften view further.

## View 03

### Anderson Street



#### Anderson Street / Tulip Street intersection facing south east

View situated within the residential facing south west along Anderson Street. View situated at junction on Tulip Street.



#### Existing condition

- Low rise residential buildings, setback from the street with existing green zones.
- Longer range views to the taller developed core of Chatswood CBD.
- Varied uses for the existing towers in the developed core.

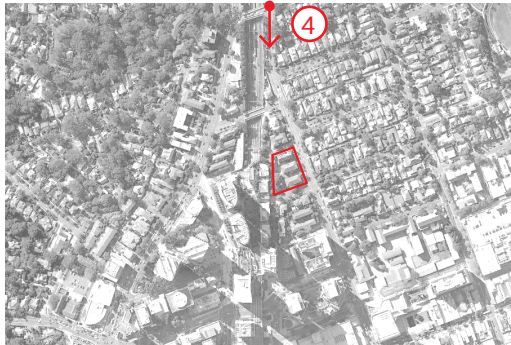


#### Proposed condition

- Additional development alongside the west of Anderson Street. 44-52 Anderson Street sits alongside two other sites. The site provides massing continuity along the street frontage.
- Podium setback allows for an increase in greenery along the street front.
- Further setback from the podium to the tower reduces the impact of the tower on the street language.
- Choice of material and articulation will provide complementary tones to the direct adjacencies and soften the reading of the form.



## View 04 Anderson Street



### Anderson Street / Ashley Street intersection facing south

View situated from transport intersection between Anderson Street and Ashley Street facing south.



### Existing condition

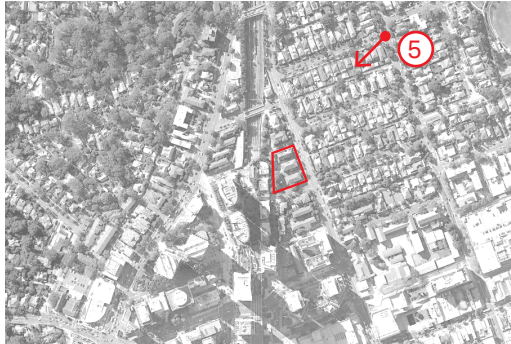
- Trafficked interchange facing towards the Chatswood CBD.
- Extensive mature trees soften the skyline and obscure the legibility of the built forms.



### Proposed condition

- Increased massing in the expansion of the Chatswood CBD can be seen in the view.
- Both the adjacent forms and existing trees obscure views towards the 44-52 Anderson Street site.

## View 05 Archer Street



### Archer Street / Violet Street intersection facing west

View situated within residential facing west towards the site. View taken at interchange between Archer Street and Violet Street.



### Existing condition

- Established Chatswood CBD can be seen beyond the low level residential.
- Existing mature trees soften the legibility of the built form in the foreground and background.
- Varied uses for the existing towers in the developed core.



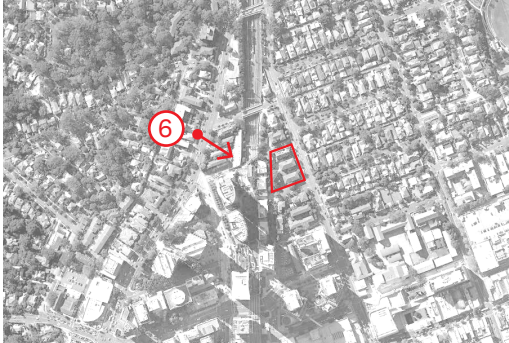
### Proposed condition

- Expansion to core, provide additional built form along Anderson Street and the north of the developed CBD. 44-52 Anderson Street sits alongside two other sites. The site provides massing continuity along the street frontage.
- Choice of material and articulation will provide complementary tones to the direct adjacencies and soften the reading of the form from distance.
- Additional built form continues language of urban core.



## View 06

### Pacific Highway



#### Pacific Highway opposite Wilson Street facing South East

View situated along Pacific Highway  
adjacent to Wilson Street.



#### Existing condition

- Trafficked interchange facing towards the Chatswood CBD.
- Lower residential uses within the foreground.
- Extensive mature trees soften the skyline and obscure the legibility of the built forms.



#### Proposed condition

- Increased massing to the expansion of the Chatswood CBD can be seen in the view.
- Both the adjacent forms and existing trees largely obscure views towards the 44-52 Anderson Street site.
- Choice of material and articulation will provide complementary tones to the direct adjacencies and soften the reading of the form from distance.